



GUIDE TO THE VILLAGE AT MACHRIHANISH DUNES



SOUTHWORTH
Europe

TABLE OF CONTENTS

The Village at Machrihanish Dunes Overview

I-3

The Ugadale Hotel

4-5

The Ugadale Cottages

6-7

The Royal Hotel

8-9

Machrihanish Dunes Golf Club

10-11

Restaurants & Pubs

12-13

Testimonials

14

The Area

15

Suggested Golf Tour Itineraries

16

Events

17

Getting Here

18

Fact Sheets

19-21

THE VILLAGE AT MACHRIHANISH DUNES



The world's most natural golf course. Luxurious seaside cottages. Historic hotels restored to their former grandeur. A wealth of fine dining options. And a tranquil full-service spa. All of these things and more are why The Village at Machrihanish Dunes has fast become Scotland's most exciting resort destination.

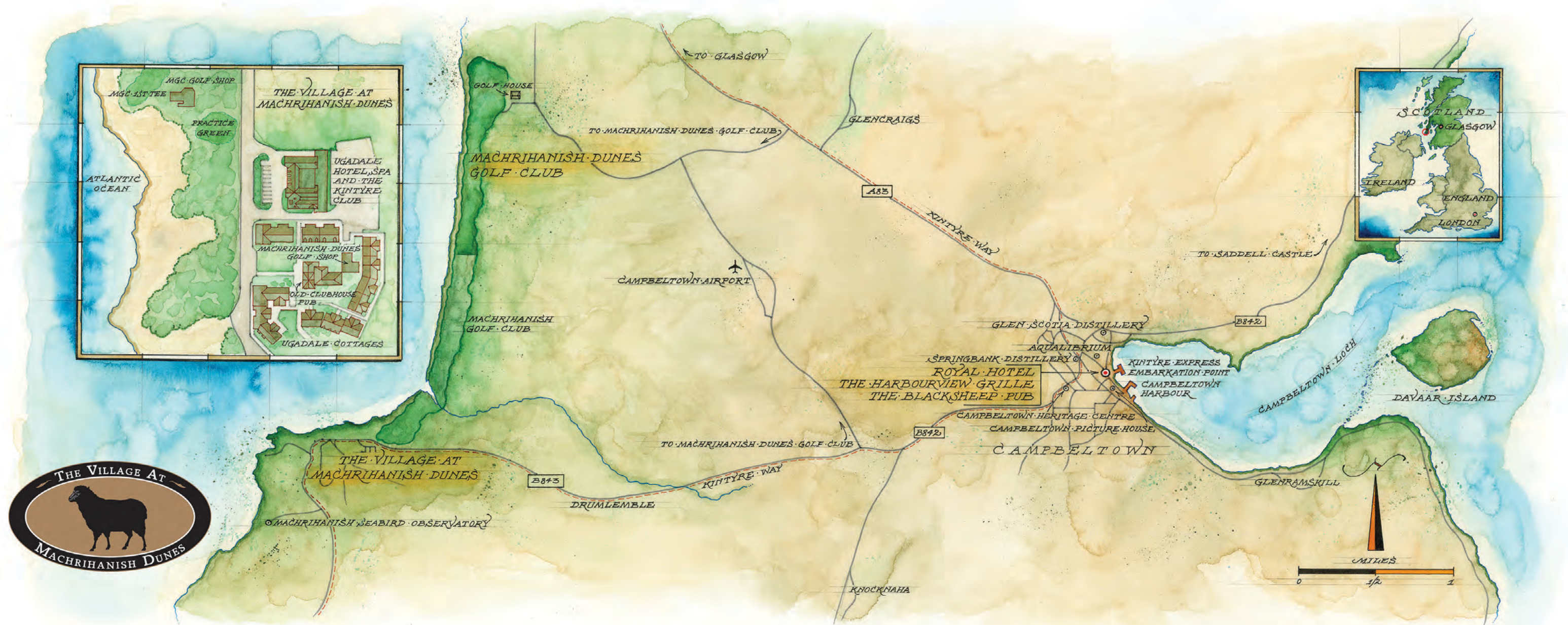
For golfers, or anyone looking to enjoy a rejuvenating holiday in one of Scotland's most scenic corners, Machrihanish Dunes offers the best of everything. The amenities and personal service are nothing short of first-class. And all the magic of Kintyre is right at your doorstep.



HIGHLY RANKED ON
TRIPADVISOR & GOOGLE REVIEWS



THE VILLAGE AT MACHRIHANISH DUNES



THE UGADALE HOTEL



2018 RESORT HOTEL OF THE YEAR,
Scottish Hospitality Awards



Once regarded as the pinnacle of luxury accommodation in the west of Scotland, The Ugadale Hotel has been restored to its former glory and serves as the centerpiece of The Village at Machrihanish Dunes. In its heyday, The Ugadale regularly welcomed captains of industry and their families from Scotland, Europe, and the U.S. who descended on Machrihanish for summer holidays with their steamer trunks for relaxing times on the beach and golf links. Now, 22 stunning guest rooms and suites pamper guests in an atmosphere of casual elegance and offer modern amenities graced with historic charm.



THE UGADALE HOTEL



When it's time to kick back, the Hotel will please even the most discriminating visitor with its inviting restaurant and bar, The Kintyre Restaurant + Bar, and world-class Serenity Spa, a full-service spa offering a wide range of soothing and rejuvenating treatments. The Hotel also features a state-of-the-art Fitness Centre for improving your overall health and well-being, as well as your golf game. In addition to its dining, fitness, and spa facilities for guests, the Hotel serves as an ideal venue for corporate events, private parties, wedding receptions, and other get-togethers.



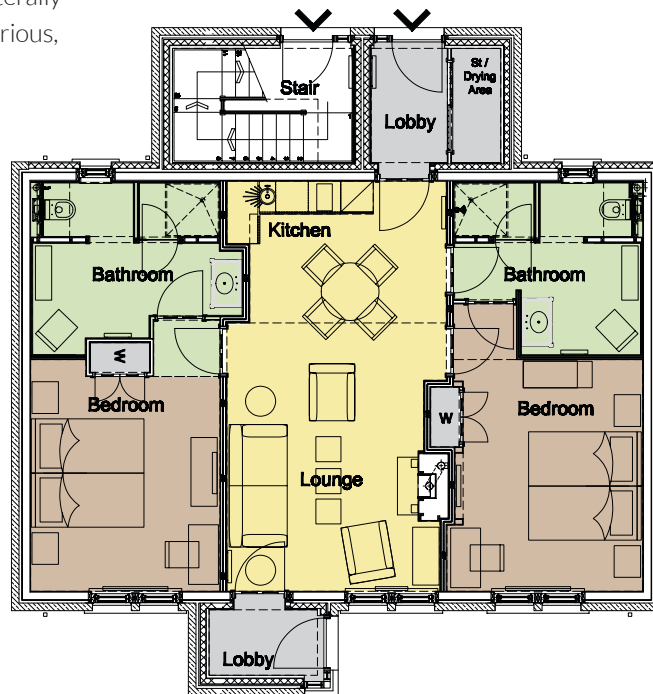
THE UGADALE COTTAGES

2016 Best Hotel (21-50 rooms),
SCOTTISH GOLF TOURISM AWARDS



Surrounded by unparalleled natural beauty, with all the grandeur of the Atlantic and the islands of the southern Hebrides right at your doorstep, the award-winning Ugadale Cottages offer holiday accommodation that is literally without equal. Each Cottage is as comfortable as it is luxurious, with interiors graced by natural stone, hardwoods, and wonderful touches that conjure up the coastal cottage at every turn.

The Ugadale Cottages provide smart accommodation for four in two spacious and well-appointed bedrooms, each with split king beds and private bathroom, plus a shared kitchen, dining area, and living room with fireplace. The Cottages have been thoughtfully configured to accommodate visiting golfers – as well as families, organisations, walkers and other visitors to the area.



THE UGADALE COTTAGES



THE ROYAL HOTEL



A mere five miles from Machrihanish in the heart of historic Campbeltown stands The Royal Hotel. The Royal serves as the “in-town” luxury hotel option for visitors to The Village at Machrihanish Dunes, ushering guests back to an era when Campbeltown was a thriving fishing and shipbuilding town – as well as the malt whisky capital of the world.



EVERY ROOM OFFERS A
STUNNING HARBOUR VIEW.


THE ROYAL
HOTEL



THE ROYAL HOTEL

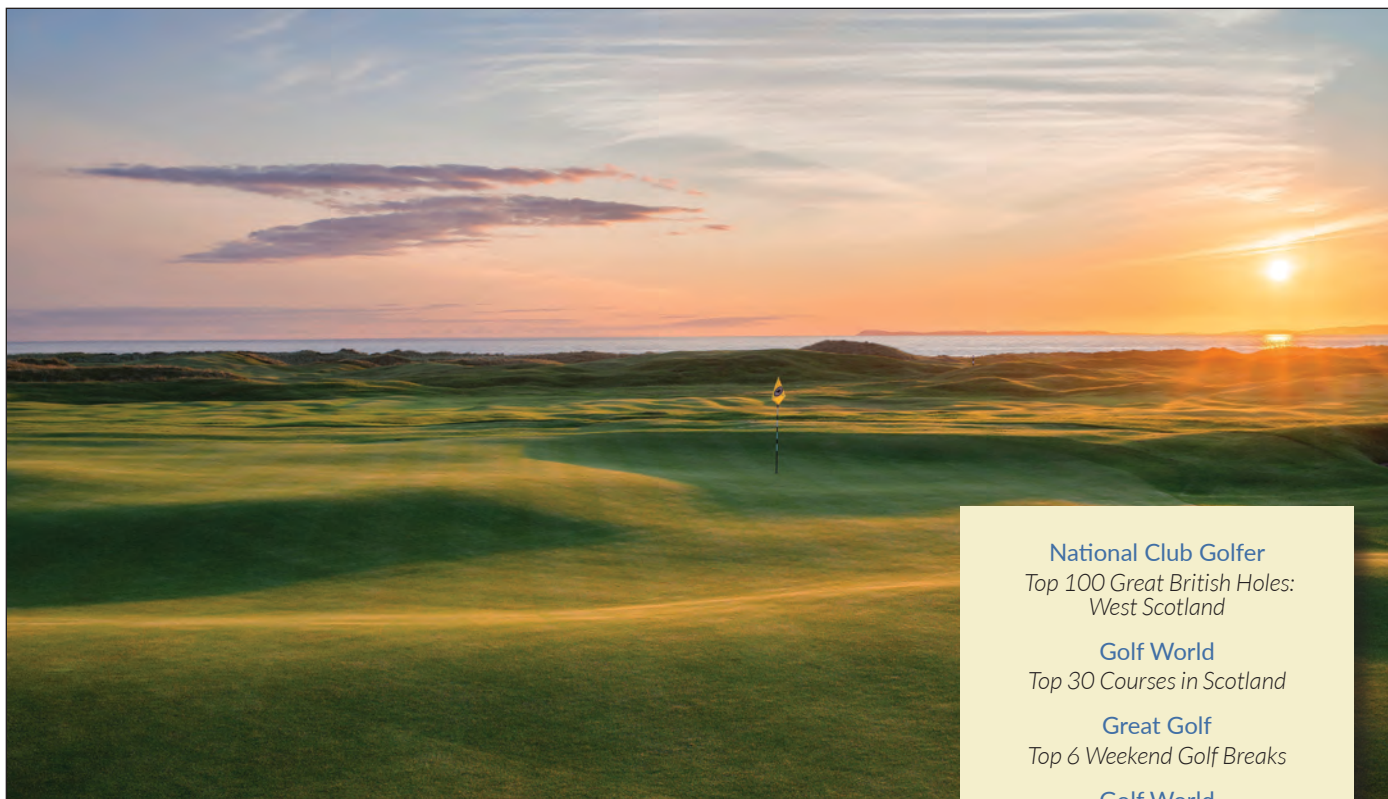


Guests at The Royal enjoy unforgettable views of Campbeltown Harbour, with its stone piers and scenic walkways. Within the hotel, you'll find all of the contemporary conveniences and amenities you'd expect in a modern luxury accommodation, set in surroundings of old-world elegance.

In addition to its 23 well-appointed guest rooms, The Royal also boasts the lively Black Sheep Pub, culinary excellence in The Harbourview Grille, and meeting and function space. Complimentary shuttle service is provided throughout the day for guests who fancy a visit to The Ugadale Hotel & Cottages, Serenity Spa at The Ugadale, The Old Clubhouse Pub, or the great natural links of Machrihanish Dunes Golf Club.



MACHRIHANISH DUNES GOLF CLUB



In Scotland, true links golf courses are not created, they are born of the land. Of the roughly 259 acres on which the Machrihanish Dunes Golf Club sits, only seven – yes, seven – were disturbed in creating this thrilling, 7,175-yard 18-hole adventure, which features no less than six greens and five tees at the Atlantic's edge. Only the tees and greens were shaped and seeded under the watchful eye of renowned course designer and Scotsman David McLay Kidd. The rest is just as nature intended it to be.

The championship-caliber links course at Machrihanish Dunes offers you the rare opportunity to create and craft golf shots just as the men of Scotland did centuries ago, when they conceived the game, brought it to birth, and gave it to the world. Machrihanish Dunes encourages thought, creativity and imagination. For the golfer who accepts the invitation and the challenge, the reward is a truly unforgettable experience.

National Club Golfer
*Top 100 Great British Holes:
West Scotland*

Golf World
Top 30 Courses in Scotland

Great Golf
Top 6 Weekend Golf Breaks

Golf World
*Top 100 Golf Courses
in U.K. & Ireland*

IAGTO
*Outstanding Commitment
to Sustainable Golf*

Golfweek
*Best Modern Courses in
Great Britain & Ireland*

**National Club Golfer
& Lady Golfer**
#1 Golf Resort Award

Bunkered Magazine Readers
Scotland's Best Experience

**Golf Environmental
Organization (GEO)**
*First-ever 18-hole GEO-certified
golf course in the U.K.*



MACHRIHANISH DUNES GOLF CLUB

Since its opening in 2009, the world-renowned links course at Machrihanish Dunes has won a slew of national and international awards and has steadily climbed higher on just about every Top 100 list in existence. Constant course enhancements made with an eye toward maximizing enjoyment and playability are the norm. Since Machrihanish Dunes is built on a Site of Special Scientific Interest (SSSI), walking is required except in the case of less physically able players, who may use a buggy driven by a caddie. Due to the nature of the course, the use of a caddie, course guide or forecaddie is strongly recommended for your first visit. These should be reserved in advance to ensure availability. Complimentary lightweight reverse trolleys equipped with broad wheelbase are also available upon request. Use of our first-class practice facilities and range balls are included with each green fee.

Machrihanish Dunes Golf Club is pleased to offer various categories of golf membership opportunities.

Please enquire at: +44 (0)1586 810 040.

MACHRIHANISH DUNES COURSE MAP



HOLE	BLACK	WHITE	YELLOW	RED	PAR	S.I.
1	345	294	260	220	4	12
2	480	421	373	373	4	6
3	592	546	510	491	5	2
4	307	247	216	181	4	14
5	165	165	130	115	3	16
6	134	134	134	95	3	18
7	461	397	351	269	4	8
8	620	559	517	461	5	4
9	435	378	354	322	4	10
OUT	3539	3141	2845	2547	36	
10	397	369	341	303	4	9
11	375	335	335	274	4	13
12	178	160	151	101	3	17
13	417	387	368	334	4	5
14	332	332	304	240	4	15
15	419	364	329	257	4	11
16	555	500	474	417	5	1
17	455	396	364	338	4	3
18	415	365	324	285	4	7
IN	3543	3208	2990	2549	36	
TOT.	7082	6349	5835	5076	72	

RESTAURANTS AND PUBS THAT RIVAL THE WORLD'S BEST



"VISITED KINTYRE [CLUB] RESTAURANT AT THE UGADALE HOTEL FOR LUNCH. THE SERVICE WAS IMPECCABLE, THE STAFF WERE FRIENDLY, AND THE FOOD SERVED WAS OF A VERY HIGH STANDARD AND OF VERY GOOD QUALITY."

- Guest comment posted on TripAdvisor®



FIVE DINING OPTIONS TO PLEASE EVERY PALATE



THE KINTYRE
RESTAURANT + BAR

THE OLD

CLUBHOUSE


HARBOURVIEW
GRILLE



At Machrihanish Dunes, we believe that one of the keys to living well is eating well. That's why we focus on locally sourced foods in our restaurants and pubs – like our local lamb and Loch Etive mussels – and why we offer a range of Scottish specialties to our guests from around the globe. But dining here is about more than just great food. It's also about place, about atmosphere – and about service. You'll enjoy five distinctively different dining options when you visit Machrihanish Dunes. With any luck, you'll be staying with us long enough to experience each one of them.

THE KINTYRE RESTAURANT + BAR – A warm and inviting atmosphere to anyone looking for an exceptional dining experience. Located in The Ugadale Hotel.

THE OLD CLUBHOUSE PUB – Classic pub food and fare in the former watering hole of “Old Tom” Morris himself. Located right next door to The Ugadale Hotel and Cottages.

HARBOURVIEW GRILLE – Culinary excellence with an unforgettable view. Located at The Royal Hotel overlooking picturesque Campbeltown Harbour.

THE BLACKSHEEP PUB – A lively centre-city pub situated right on the waterfront at The Royal Hotel in Campbeltown.

THE HALFWAY HOUSE – Located in the Golf House at Machrihanish Dunes Golf Club, the homemade soups, sandwiches and other selections here will make your golf game all the more memorable.

TESTIMONIALS

[The Ugadale Cottages] have always been some of the best accommodation you can get in Scotland...I'm very happy to see Mach Dunes maturing into another wonderful golf destination.

– Randy H. | Atlanta, GA, USA

Magical weekend away. Machrihanish Dunes is a must for the golf enthusiast. This is a wonderful natural links course on a windswept beach overlooking the Atlantic Ocean. You will find helpful and friendly staff in the clubhouse, bacon butties, warm hats, good advice on hand. Greens are well kept; bunkers like you have never seen before. [...] Suite No 5 was one of the best rooms I have ever had in the UK. Staff was very attentive. Nice pub next door. If you are looking for solitude, views, luxury and golf this is the place to go. We all want to go back. Trip score? 10 out of 10.

– Karolina Pailing

Absolute one of the best courses for golfing. I have played around 40-50 links courses in UK. Everything around this fabulous course can't be better. I will definitely return next year. Thanks for everything.

– Henrik O. | Oslo, Norway

Our golf pilgrimage to Scotland was something we've planned for years. We couldn't wait to play links giants like Troon and Prestwick, but it was Machrihanish Dunes that turned out to be by far the best experience on our week-long links journey. From the second we walked into the shop at the village, the entire experience was truly first-class.

– Jason Bartlett. | Westchester, NY, USA

The accommodation is first class and far exceeded all our expectations. We were all pleasantly surprised by the standard of all rooms and the styling of the cottages, which managed a perfect balance of comfort and luxury.

– Allan Hamilton | Reading, England

Your cottages are stunning and the course is absolutely fantastic. I've played most of the famous courses in Scotland and for me your course is the best design and most enjoyable I've ever played.

– Ryan King | Glasgow, Scotland

Played this course for the 1st time this week & found the course excellent & extremely enjoyable. This is an exceptionally good golf course ... the Fairways here are like nothing else we've ever experienced anywhere & the views are wonderful too! We've played dozens of the best courses in Scotland...but have seldom enjoyed a round of golf as much as we did here.

– Robert S. | Paisley, UK

I had the pleasure of playing Machrihanish Dunes a few weeks ago and oh my goodness is it a truly revolutionary golf course. It is an absolute joy and could possibly be the world's one and only truly sustainable golf course. This course goes beyond minimalism in not only its design but also in its maintenance. I really hope that people get to experience and understand what Southworth Development is trying to achieve there as everyone in the golf industry could learn an awful lot from it.

– Robin M. | Naples, FL, USA

Machrihanish Golf is without doubt one of the finest golf courses in the UK if not the World. A traditional links which is a fantastic test of golf and always in great condition. The first hole has a sign stating "The best opening hole in the World" and this is undoubtedly true as it requires an opening drive over the Atlantic Ocean. If you like golf you will love Machrihanish Golf Course. A must play.

– Stuart M. | Dumbarton, Scotland

Machrihanish Dunes is a special course, a place where you can get lost in golf and that's just perfect.

– Craig J. | Stonehaven, Scotland



THE AREA



Machrihanish Beach



Springbank Distillery



Machrihanish Golf Club



Campbeltown Harbour

Machrihanish Dunes is located on the Atlantic Ocean adjacent to the world-famous Machrihanish Golf Club, designed in 1876 by “Old Tom” Morris. Machrihanish GC is a perennial World-Top-100 Course and is always on the short list of serious golfers worldwide. Machrihanish GC is widely regarded as having the best opening tee shot in golf.

With its oceanfront location, Machrihanish Dunes possesses breathtaking views of the Atlantic Ocean, the Paps of Jura, the Isle of Islay, and the northern coast of Ireland. Its natural location has afforded the Machrihanish area miles of beautiful, pristine beaches that just beg to be explored.

The adjacent town of Campbeltown is most notable for the famed Springbank Distillery and the fact that, from 1849 to 1916, the town boasted 32 distilleries, making it the “whisky capital of the world.” Guests at The Village at Machrihanish Dunes are invited to tour the Springbank facility, where the entire whisky-making process, from traditional floor malting to bottling, is done under one roof. Visitors may also enjoy a relaxing dram after the tour in their luxurious Tasting Room. For more information on tours, times and availability, please enquire by telephone at +44 (0)1586 551 710 or visit www.springbankwhisky.com.

SUGGESTED GOLF TOUR ITINERARIES



Dunaverty



Royal Portrush

It's easier than you think to include Machrihanish on a links golf itinerary. Here are a few that you may want to consider.

LINKS GIANTS & GEMS

Little driving, play three Open Championship courses and three or four more links gems!

DAY ONE

Arrive at Glasgow Airport

Play Royal Troon GC

Overnight in Ayrshire

DAY TWO

Play Prestwick GC

Overnight in Ayrshire

DAY THREE

Play Western Gailes GC or Dundonald Links

Overnight in Ayrshire

DAY FOUR

Play Turnberry Ailsa Course

Take Cal-Mac Ferry to Campbeltown

Overnight at Machrihanish Dunes

DAY FIVE

Play Machrihanish Dunes

Overnight at Machrihanish Dunes

DAY SIX

Play Machrihanish GC

Overnight at Machrihanish Dunes

DAY SEVEN

Fly to Glasgow from Campbeltown

Return to point of departure

ISLANDS & MORE

A delicious menu of well-known and lesser known links golf treats!

DAY ONE

Arrive at Glasgow Airport

Fly or drive to Campbeltown

Play Dunaverty GC

Overnight at Machrihanish Dunes

DAY TWO

Play Machrihanish Dunes GC

Overnight at Machrihanish Dunes

DAY THREE

Play Machrihanish

Overnight at Machrihanish Dunes

DAY FOUR

Take Cal-Mac Ferry to Islay

Play Machrie GC

Overnight at Machrihanish Dunes

DAY FIVE

Take Cal-Mac Ferry to Arran

Play Shiskine GC

Overnight in Ayrshire

DAY SIX

Take Cal-Mac Ferry to Ayrshire

Play Turnberry, Royal Troon, or Prestwick

Overnight in Ayrshire

DAY SEVEN

Return to Glasgow Airport

IRELAND-SCOTLAND DREAM TRIP

An 8-day golf adventure featuring the best of the best links courses.

DAY ONE

Arrive at Dublin Airport

Play Royal County Down GC

Overnight in Portrush

DAY TWO

Play Royal Portrush GC

Take Kintyre Express fast-rib from Ballycastle to Campbeltown

Overnight at Machrihanish Dunes

DAY THREE

Play Machrihanish Dunes GC

Overnight at Machrihanish Dunes

DAY FOUR

Play Machrihanish GC

Overnight at Machrihanish Dunes

DAY FIVE

Take Cal-Mac Ferry to Ayrshire

Play Royal Troon GC

Overnight in Ayrshire

DAY SIX

Play Prestwick GC

Overnight in Ayrshire

DAY SEVEN

Play Turnberry Ailsa

Overnight in Ayrshire

DAY EIGHT

Return to point of departure

LOCAL EVENTS



Guests at Machrihanish Dunes are invited to take part in all of the club's open events. Listed below are the main annual ones. Guests can compete with players from all around the area – and the world – then enjoy the post-round merriment. It's a great way to make new friends and take home some wonderful memories. One event that's a particular favorite is the unique Shepherd's Cross tournament, during which participants play the front nine holes of the Machrihanish Golf Club then hop over to the 4th hole at Machrihanish Dunes and play the event's final nine holes there. Early sign-up is recommended for this and all open events at Mach Dunes.

JANUARY
NEW YEAR'S DAY OPEN

JUNE
CAMPBELTOWN OPEN

JULY
SHEPHERD'S CROSS TOURNAMENT

AUGUST
BLACK SHEEP OPEN

OCTOBER
KINTYRE AUTUMN PAIRS CLASSIC

AREA EVENTS

Campbeltown and Machrihanish are more than just the perfect golf escape. The natural beauty of Machrihanish can be taken in on the stunning beaches or the serene walking trails, and Campbeltown is abuzz with activity year-round.

- **Campbeltown Malts Festival** – Mid-May
Celebrating the area's premier distilleries with 3 days of superb tastings and tours.
- **Kintyre Songwriter's Festival** – Mid-May
Showcasing singer and songwriter talents from Kintyre and beyond.
- **Mull of Kintyre Run** – Mid-May
Encouraging runners of all skill levels to take part in the local festivities surrounding the adult short run, half marathon, and junior run.
- **Mull of Kintyre Music Festival** – Mid-August
A chance to enjoy modern and traditional Scottish music in a beautiful setting.
- **Mull of Kintyre Christmas Festival** – End of December
Bringing Christmas cheer to Campbeltown in spectacular fashion, with seasonal celebrations, tree lighting, and even an ice skating rink.

GETTING HERE

BY LAND: The breathtaking three-hour drive from Glasgow is a three-stage scenic delight conjuring memories of several song lyrics along the way. It is a journey of discovery that begins along the "Bonnie Bonnie Banks of Loch Lomond," winding through the Highlands (which locals call "the rest-and-be-thankful" road), one the most scenic drives in Europe, and finally, meandering along a stunning Atlantic coastal highway – Sir Paul McCartney's "Long and Winding Road". If time permits, it's recommended that this scenic drive be experienced at least one way.

Machrihanish Dunes shuttle buses provide transport for guests throughout The Village to and from the Machrihanish Dunes Golf Club, The Ugadale Hotel & Cottages, The Old Clubhouse Pub, Serenity Spa at The Ugadale, The Royal Hotel, and Campbeltown Airport.

Commercial and Charter Coach

West Coast Motors

Commercial bus and coach services operate from six depots based throughout Argyll, the Isle of Bute and Glasgow, or for private hire seating 8-53 passengers.

+44 (0)1586 552319

West of Scotland Chauffeur Drive

Coaches and Mercedes-Benz Viano service to fit 6-40 passengers comfortably. On-board Coach Hostesses are available to assist with your journey along with experienced chauffeurs who are keen golfers as well as helpful guides.

+44 (0)8444 740220

BY AIR: Air access is direct into Campbeltown Airport located adjacent to the golf course and just minutes from both hotels. Commercial flights, chartered private jets, and privately owned planes can fly directly from the U.S., Europe, or Glasgow and touch down on the second longest runway in Europe, just a stone's throw from Machrihanish Dunes Golf Club.

Commercial Airlines

Loganair

Offers flights twice-daily weekdays year-round and Sunday afternoons during the summer. Travel direct from Glasgow to Campbeltown with a flight time of just 25 minutes.

+44 (0)1392 268529

Small Fixed-Wing & Helicopter Charter (Up to 9 Passengers)

Hebridean Air Services

9-seat twin-engined Islander aircraft suitable for shorter distances, (i.e. to Campbeltown from Glasgow, Prestwick, Islay, Oban, or Belfast & Derry in Northern Ireland).

+44 (0)8458 057465



PDG Helicopters

Specialise in golf charters with aircraft seating 4-9 passengers. Bases at Inverness, Glasgow, Aberdeen and Dublin.

+44 (0)1667 462740

Loch Lomond Seaplanes

5 and 9-seat single-engined amphibious aircraft can operate from water and land. Based at Glasgow & Loch Lomond.

+44 (0)1436 675030

Mid-sized Aircraft Charter (18-50 Passengers)

Loganair

18-seat Twin Otter for shorter flights and 34-seat SAAB 340 capable of operating from any major Scottish/UK airport. Aircraft based at Glasgow, Edinburgh, Dundee, and Aberdeen.

+44 (0)1856 87360 (Islander/Orkney) or

+44 (0)1418 487594 (SAAB 340)

Eastern Airways

Turbo-prop and jet aircrafts with 29, 37, and 50 seats. Aircraft based at Aberdeen and Humberside.

+44 (0)8703 669199

Business Jet Charter (Up to 18 Passengers, Long Distance Travel)

Air Charter Scotland

Cessna Citation and Embraer Legacy business jets with 7-12 seats, suitable for long-distance flights including European and trans-Atlantic travel with UK aircraft bases at Luton and Biggin Hill.

+44 (0)1355 590300

NetJets

Operates the world's largest fleet of private jets with a variety of aircraft options for national and international travel.

+44 (0)2073 619620

Gama Aviation

Global business aircraft operator with over 25 years experience in charter flights. Aircrafts from 6-18 passengers available. Aircraft bases in England, Hong Kong, UAE and United States.

+44 (0)1252 553000

BY SEA: Enjoy transport in speed and style while you take in the stunning scenery of the Firth of Clyde and Campbeltown Loch before arriving in Campbeltown Harbour.

Kintyre Express

Crossing from Troon and Ballycastle directly to Campbeltown, Kintyre Express utilises 11-metre fast-RIBs with centrally heated and fully enclosed cabins that seat up to 12. The Ballycastle route has scheduled round-trip service and boats are available for private charter to both destinations.

+44 (0)1586 555895

CalMac Ferries

CalMac offers commercial ferry service for golfers travelling from Islay (Port Ellen) and seasonal service from Ardsrossan. These large ships provide space for 62 cars and over 600 passengers and offer special packages for groups of 12 or more.

+44 (0)1475 650355

FACT SHEET

On the outer fringe of western Scotland, there exists a very special place. Nestled in the southwest corner of the Mull of Kintyre, where the movements of sea, sand, wind, and grazing sheep have intertwined over countless centuries, an inspirational golf and holiday destination has been born. Here, in this raw and beautifully rugged place, you'll find The Village at Machrihanish Dunes – a magical place where you can reconnect with nature while reveling in accommodations that surround you with luxury.

The Village at Machrihanish Dunes, consisting of Machrihanish Dunes Golf Club, The Ugadale Hotel & Cottages, The Royal Hotel, The Old Clubhouse Pub, and a variety of other dining and pub options, provides visitors with a golf and holiday resort experience rivaling the best in the world.

LUXURY ACCOMMODATIONS

The Ugadale Hotel – Standing proud for more than 100 years, The Ugadale Hotel (formerly known as the Machrihanish Hotel), was once regarded as the pinnacle of luxury accommodation in the west of Scotland. In its heyday, The Ugadale regularly welcomed captains of industry and their families, who descended on Machrihanish for summer holidays with their steamer trunks and visions of relaxing times on the beach and golf links.

Twenty-two stunning guest rooms and suites pamper guests in an atmosphere of casual elegance and offer modern amenities graced with historic charm. When it's time to kick back, the Hotel will please even the most discriminating visitor with its warm and inviting, private restaurant and bar, The Kintyre Restaurant + Bar, and Serenity Spa, a full-service spa offering a wide range of soothing and rejuvenating treatments. In addition to its dining and spa facilities, the Hotel serves as an ideal venue for corporate events, private parties, weddings, business meetings and other group gatherings.

The Ugadale Hotel was named "Best Hotel (21-50 Rooms)" in 2015 and 2016 by the Scottish Golf Tourism Awards and was named 2018 "Resort Hotel of the Year" by the Scottish Hospitality Awards.

The Ugadale Cottages – Located next to the Ugadale Hotel, overlooking the Atlantic and the famous opening hole at Machrihanish Golf Club. Each of the eight two-bedroom golf cottages has been created from the finest natural materials and appointed with an eye toward casual elegance. The cottages are fully furnished with a fireplaced central living area and kitchenette, along with two bedrooms (two twins or a zip king configuration) each with en suite bathroom. The golf cottages are available for rent on a nightly basis or for life with a limited number of Freehold Fractional ownership opportunities.

The Royal Hotel – Hailed as a favourite destination for the Scottish "elite" since the turn of the last century, The Royal Hotel was built in 1907 by Architect James Munro. Munro later designed The Grand Hotel in St. Andrews using a similar but larger design. Located in the centre of Campbeltown and with views across picturesque Campbeltown Harbour, the Hotel has been fully restored to with twenty-three luxurious guest rooms, a lively pub, and restaurant. With its premiere location, The Royal caters to Campbeltown business travellers as well as golfers and area tourists, ushering guests back to an era when Campbeltown was a thriving fishing and shipbuilding town—as well as the malt whisky capital of the world. No fewer than thirty-two distilleries called Campbeltown home in the late 1800s and early 1900s. Springbank Distillery, located just around the corner, remains the oldest independent family-owned distillery in all of Scotland.

The Royal Hotel also offers meeting and function space, The Black Sheep Pub and Harbourview Grille featuring culinary excellence overlooking Campbeltown Harbour. Shuttle service is available throughout the day for guests who fancy a visit to The Ugadale Hotel & Cottages, Serenity Spa at The Ugadale, The Old Clubhouse Pub, or the great natural links of Machrihanish Dunes Golf Club.

FACT SHEET

MACHRIHANISH DUNES GOLF CLUB

The championship-standard course at Machrihanish Dunes was created by hand in and amongst environmentally protected dunes that couldn't have been better suited for a world-class links golf course. It has been hailed as "the world's most natural golf course" – and with good reason. The 18-hole seaside layout you'll play here is a pure links course that harkens back to the origins of links golf and presents challenges unlike any you're liable to have encountered before. It's a course that has quickly earned a reputation for its majestic beauty – and its prolific challenges.

While the original site featured 23 "natural" holes, architect and Scotsman David McLay Kidd (who is internationally acclaimed for his design of Bandon Dunes in Oregon as well as the Castle Course in St. Andrews), chose his 18 favourites. Machrihanish Dunes measures 7,175 yards and features six greens and five tees at the ocean's edge which are a true testament to "the way golf began".

"The Greenest Golf Course in the World" – Machrihanish Dunes Setting a New Standard

Machrihanish Dunes isn't just the way golf began, it's the way golf should be. Located on 259 acres of pristine links land in Machrihanish, Scotland, Machrihanish Dunes is the first golf course ever to be permitted to be built on a Site of Special Scientific interest (SSSI). It is also the first 18-hole links golf course to be built on the west coast of Scotland in 100 years.

With SSSI status, the land which Machrihanish Dunes inhabits is amongst the most protected in Scotland. Pristine and beautiful, the site is not only the largest sand dune in the region but is also home to five rare types of orchid. Working hand in hand with Scottish Natural Heritage, Machrihanish Dunes continues to preserve and even enhance this important site.

As a result of these efforts, Machrihanish Dunes has received Golf Environmental Organization's (GEO) Certification for creating and maintaining a sustainable golf agenda, while fulfilling GEO's required assessments for maintenance and management practices at the most comprehensive eco-levels. Machrihanish Dunes was the first 18-hole golf course in the U.K. ever to achieve GEO certification. GEO is the only international non-profit organization dedicated entirely to helping golf achieve its potential as a social, environmental, and economic asset. GEO's certification programs are the most credible, comprehensive eco-labels available for existing golf facilities and new developments. In 2016, GEO recognised Machrihanish Dunes with an international award for its "Outstanding Commitment to Sustainable Golf."

Quick Facts on Mach Dunes Maintenance Practices

- Almost no heavy machinery was used in the course's construction.
- Shaping was done only on the greens and tees, and only with the use of a backhoe.
- Bunkers, for the most part, were simply placed in areas that rabbits had already damaged.
- In the end, just seven of the course's 259 acres were altered to create the course as it exists today.
- Black Hebridean Sheep are used in the off-season to help keep fescue grasses in check.
- No chemicals or irrigation are used on the fairways.

Though Machrihanish was built in a way that mirrors how golf began, it may also be the first clear look at the golf course of the future. Fully sustainable, rugged, raw, and beautiful, Machrihanish Dunes co-exists with the land to actually improve the quality of the environment. With the active removal of trash and non-native pests that had begun to inhabit the space, Machrihanish Dunes has returned a pristine state to the land that now offers visitors such a wonderfully natural golf experience.

FACT SHEET

THE DEVELOPER

Machrihanish Dunes Golf Club; The Village at Machrihanish Dunes, The Ugadale Hotel & Cottages, and The Royal Hotel are owned and operated by an affiliate of Southworth Development LLC of Newton, Massachusetts, USA.

Southworth Development specializes in the creation of residential resort and hospitality-branded real estate communities. Founded by David Southworth, the company has grown to become one of the industry's great success stories. During his career, David has developed over \$1 billion in golf and hospitality projects. Today, Southworth Development is recognised as a leader in the field, known for its dedication to quality and consistency.

In 2006, Joe Deitch, a longtime close friend of David Southworth, joined the company as Chairman and visionary partner. Along with David, Joe has helped position the company to succeed in the dramatically changing world of real estate and resort development. Joe's passion for the business and his many talents have helped create an organization that's unique in the real estate development world – a veritable “dream team” of professionals from many different disciplines. As the Founder and Chairman of Commonwealth Financial Network, the nation's largest privately owned, independent broker/dealer firm with over \$10 billion in management, Joe's financial acumen is well known. His expertise has strengthened the Southworth company on many levels.

But Joe Deitch is much more than just a numbers guy. He's a true visionary with an innate ability to spot, and capitalize on, the trends that shape our industry. His marketing savvy helps steer the company on a regular basis. And his personal commitment to the ideals of quality, community, and integrity reinforces all that Southworth stands for. Southworth's other properties include:

The Abaco Club, a stunning tropical paradise and true sporting club located in The Abacos, a string of quiet Bahamian islands. Nestled in the waters of Winding Bay, the property boasts the world's first “tropical links” golf course and the #1 course in The Bahamas.

Creighton Farms, a 964-acre, luxury residential golf community located just outside of Washington D.C. in Aldie, Virginia. Creighton Farms features a Jack Nicklaus Signature Golf Course, recognised as one of the ‘Best New Courses in 2008’ by Golf Digest, Golf Magazine and Travel + Leisure Golf – one of only two private courses in the world to be recognised by all three publications that year.

Willowbend, an award-winning private residential golf community located on picturesque Cape Cod with 27-hole championship golf course.

Meredith Bay, a remarkable 600-unit gated community and marina on New Hampshire's famed Lake Winnepesaukee. Stunning Adirondack and Craftsman-style homes, lakefront Townhomes and lakeview Condominiums with an enviable array of community amenities and events.

Renaissance, in Haverhill, Massachusetts, the first Brian Silva Signature Golf Course and the 2012 “Golf Course of the Year” by the New England chapter of the Golf Course Owners Association of America.

MACH DUNES ACCOLADES

Top 6 Modern Golf Courses in the World

LINKS Magazine

Top 6 Weekend Golf Breaks

Great Golf

Top 100 Courses in Scotland

Golf World

100 Great British Holes: West Scotland

National Club Golfer

Top 100 Golf Courses in U.K. & Ireland

Golf World

Best Hotel (21-50 Rooms) - The Ugadale Hotel

Scottish Golf Tourism Awards

Resort Hotel of the Year - The Ugadale Hotel

Scottish Hospitality Awards

Outstanding Commitment to Sustainable Golf

IAGTO

Best Modern Courses in Great Britain & Ireland

Golfweek

Top Destinations for Buddies Trips (Top 3)

Golf Digest

Britain's Top 100 Courses Under £100

National Club Golfer

Sustainable Course of the Year - #2

IAGTO

Top 36 Destinations for Buddies Trips, #1

Golf Digest

“Golf Resort Award” #1

National Club Golfer & Lady Golfer

Resort Experience of the Year

Golf Tourism Scotland

Scotland's Best Experience

Bunkered Magazine Readers

Top 100 Golf Courses in Scotland

Golf World



BOOK NOW!

Our staff is standing by and ready to help you with bookings or answer any questions you may have.

Please contact us at **+44 (0)1586 810000** or Freephone within UK **0800 151 3701**
or visit our website at www.MachDunes.com.

TRAVEL INDUSTRY ENQUIRY?

Contact our Travel Partner Liaisons:

Lorraine Griffiths
+44 (0) 1586 810 041
lgriffiths@machdunes.com

Fiona Gillies
+44 (0) 1586 810 019
fiona@machdunes.com



THE VILLAGE AT MACHRIHANISH DUNES, MACHRIHANISH, ARGYLL, SCOTLAND, PA28 6PT
WWW.MACHDUNES.COM | EMAIL: info@machdunes.com | +44 (0)1586 810000

